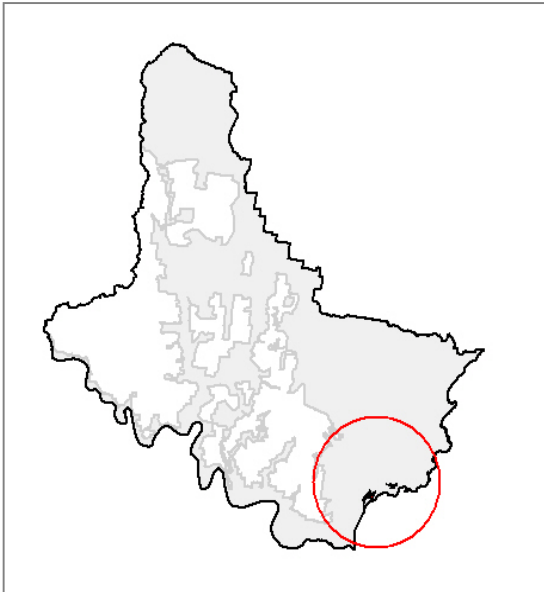


# Bouddi Sandstone Coastal Heath

## Exposed Hawkesbury Woodland (Heath)

Unit E26e  
REMS Unit 26a



### General Description:

On the windswept ridgetops of Bouddi Ridge in Bouddi National Park, and other parts of the Bouddi Peninsula, outcrops of Hawkesbury Sandstone support heath vegetation dominated by *Allocasuarina distyla* and *Banksia ericifolia* var. *ericifolia*. A range of other species is present, including interesting occurrences of stunted *Syncarpia glomulifera*, *Eucalyptus umbra*, *Eucalyptus scias* and *Angophora costata*, together with shrubs such as *Hakea teretifolia*, *Baeckea brevifolia*, *Platysace lanceolata*, *Isopogon anemonifolius*, *Xanthosia pilosa*, *Philothea buxifolia*, *Xanthorrhoea media*, and *Dillwynia retorta*. This vegetation type is a coastal variation of the more inland coastal heaths, but is distinct and disjunct enough to be treated as a sub-community in its own right.

### Known Floristic/ Structural Variations:

No variants in this community have been identified.

### Distribution:

*Within Gosford LGA* – this vegetation type occurs only on the exposed Hawkesbury Sandstones of the Bouddi Peninsula.

*Within LHCC Region* – NPWS (2000) have modelled 2052ha of their Exposed Hawkesbury Woodland (Heath) (Unit 26a) as remaining in the region, which would include this sub-community.

### Examples Within Gosford LGA

- Hawke Head Drive, Bouddi NP

Extent: *Extant* - 86.66 ha

### Relationship to Other Communities:

Bouddi Sandstone Coastal Heath is the only heath vegetation occurring directly on the coast on Hawkesbury Sandstone substrates. As such, the dominance of *Allocasuarina distyla* with *Banksia ericifolia* var. *ericifolia* sufficiently distinguishes it from the Hawkesbury Rock Pavement Heath (Unit E26a) and the Hawkesbury Coastal *Banksia* Scrub-Woodland (Unit E29a). Other coastal heaths on clay-based soils of the Narrabeen Sandstone series, such as the Coastal Headland

Shrubland (Unit E51c) and Coastal Headland Paperbark Scrub (Unit E51d), support clay-based species such as *Melaleuca nodosa*, *Dodonaea triquetra*, and *Westringia fruticosa*, and have far fewer sandstone-based species.

### Equivalent Vegetation Types:

• Benson 1981 (Mangrove Creek):	n/a
• Benson & Fallding 1981 (Brisbane Water)	n/a
• Benson 1986 (Gosf-Lake Mac):	Open-heath (Unit 10a)
• Clarke & Benson 1986 (Dharug):	n/a
• Strom 1986 (Bouddi Peninsula):	Open heath (Units 5.3.1 & 5.3.2)
• Clarke & Benson 1987 (Mt White/ Mt Olive):	n/a
• McRae 1990 (Bouddi Peninsula):	Low shrubland/ open-heath (Unit 2.1)
• Binns 1996 (SF MFD):	n/a
• Payne 1997 (Cockle Bay/ Bouddi):	n/a
• Bell 1998 (Popran NP):	n/a
• Bell 2002 (Wyong LGA):	n/a

### Significant Species:

- Undescribed species – *none recorded*
- Threatened (TSC Act) – *none recorded*
- Rare (ROTAP) – *Rulingia hermannifolia* (?)

### Community Conservation Status:

*Reserve Representation* - within Gosford, areas of this vegetation type are almost all contained within Bouddi NP.

*TSC Act (1995) Status* - not currently listed.

### Mapping Reliability & Included Units:

*High Resolution Area* – this vegetation type has been mapped from aerial photographic interpretation and ground truthing.

*Low Resolution Area* – this community is not expected to occur within the low resolution area.

### Vegetation Structure:

Stratum	Mean height (m)	Min height (m)	Max height (m)	Mean cover (%)	Sdev	n
Emergent						
Tallest	2.17	1.50	2.50	44	50.9	2
Middle 1	0.77	0.30	1.50	73	17.7	2
Middle 2						
Middle 3						
Lowest	0.20	0.10	0.30	15		1

### Key Diagnostic Species [based on 2 plots]:

Life Form	Species	Community		All others		Fidelity
		c/a	Freq.	c/a	Freq.	
Tree	<i>Eucalyptus umbra</i>	2	100%	2	10%	positive
	<i>Syncarpia glomulifera</i> subsp. <i>glomulifera</i>	2	100%	2	28%	positive
	<i>Angophora costata</i>	1	100%	2	30%	uninformative
	<i>Eucalyptus scias</i> subsp. <i>scias</i>	1	50%	2	1%	uninformative
Small tree	<i>Banksia serrata</i>	1	50%	2	25%	uninformative

## Bouddi Sandstone Coastal Heath – E26e

Shrub	<i>Pimelea linifolia</i>	4	100%	1	20%	positive
	<i>Acacia myrtifolia</i>	3	100%	1	11%	positive
Shrub	<i>Allocasuarina distyla</i>	6	50%	2	3%	positive
	<i>Pultenaea daphnoides</i>	5	50%	1	7%	positive
	<i>Leptospermum polyanthum</i>	4	50%	1	0%	positive
	<i>Polyscias sambucifolia</i>	4	50%	1	17%	positive
	<i>Banksia ericifolia</i> subsp. <i>ericifolia</i>	3	50%	3	16%	positive
	<i>Baeckea brevifolia</i>	2	50%	1	2%	positive
	<i>Baeckea diosmifolia</i>	2	50%	2	6%	positive
	<i>Dillwynia retorta</i>	2	50%	2	5%	positive
	<i>Dillwynia rudis</i>	2	50%	2	0%	positive
	<i>Epacris longiflora</i>	2	50%	1	1%	positive
	<i>Isopogon anethifolius</i>	2	50%	2	1%	positive
	<i>Leptospermum arachnoides</i>	2	50%	1	3%	positive
	<i>Leptospermum squarrosum</i>	2	50%	1	0%	positive
	<i>Philotheca buxifolia</i>	2	50%	2	4%	positive
<i>Platysace lanceolata</i>	2	50%	1	16%	positive	
<i>Xanthorrhoea media</i>	2	50%	2	15%	positive	
Shrub	<i>Hakea teretifolia</i>	1	100%	1	17%	uninformative
	<i>Lambertia formosa</i>	1	100%	2	18%	uninformative
	<i>Acacia suaveolens</i>	1	50%	1	28%	uninformative
	<i>Banksia oblongifolia</i>	1	50%	2	18%	uninformative
	<i>Banksia spinulosa</i>	1	50%	2	16%	uninformative
	<i>Dodonaea triquetra</i>	1	50%	1	17%	uninformative
	<i>Gompholobium latifolium</i>	1	50%	1	15%	uninformative
	<i>Hibbertia aspera</i>	1	50%	1	4%	uninformative
	<i>Lasiopetalum ferrugineum</i>	1	50%	1	5%	uninformative
	<i>Leptospermum polygalifolium</i>	1	50%	2	24%	uninformative
	<i>Leptospermum trinervium</i>	1	50%	2	27%	uninformative
	<i>Monotoca scoparia</i>	1	50%	1	10%	uninformative
	<i>Notelaea longifolia</i>	1	50%	1	16%	uninformative
	<i>Petrophile pulchella</i>	1	50%	2	18%	uninformative
	<i>Platysace linearifolia</i>	1	50%	2	32%	uninformative
	<i>Xanthorrhoea macronema</i>	1	50%	2	3%	uninformative
	Sub-shrub	<i>Lasiopetalum parviflorum</i>	2	50%	1	0%
<i>Hibbertia virgata</i> subsp. <i>virgata</i>		2	50%	0	0%	unique
<i>Hibbertia obtusifolia</i>		1	50%	2	1%	uninformative
<i>Leucopogon esquamatus</i>		1	50%	1	1%	uninformative
Herb	<i>Gonocarpus teucrioides</i>	4	50%	1	15%	positive
	<i>Phyllanthus hirtellus</i>	2	50%	1	18%	positive
	<i>Xanthosia pilosa</i>	2	50%	1	13%	positive
	<i>Xanthosia tridentata</i>	2	100%	1	10%	positive
	<i>Actinotus helianthi</i>	1	50%	1	7%	uninformative
	<i>Dampiera stricta</i>	1	50%	1	12%	uninformative
	<i>Goodenia bellidifolia</i> subsp. <i>bellidifolia</i>	1	50%	1	5%	uninformative
<i>Opercularia aspera</i>	1	50%	1	5%	uninformative	
Grass	<i>Themeda australis</i>	3	50%	2	24%	positive
	<i>Entolasia stricta</i>	4	50%	2	53%	constant
Graminoid	<i>Lomandra glauca</i>	2	100%	2	18%	positive
	<i>Lomandra obliqua</i>	5	100%	2	19%	positive
	<i>Lomandra filiformis</i>	1	50%	1	9%	uninformative
	<i>Patersonia glabrata</i>	1	50%	2	7%	uninformative
	<i>Patersonia sericea</i>	1	50%	2	18%	uninformative
	<i>Lomandra longifolia</i>	1	50%	2	45%	negative
Ground fern	<i>Pteridium esculentum</i>	1	50%	2	42%	negative
Climber	<i>Mirbelia rubrifolia</i>	2	50%	1	6%	positive
	<i>Billardiera scandens</i>	1	50%	1	29%	uninformative
	<i>Glycine clandestina</i>	1	50%	2	22%	uninformative

Bouddi Sandstone Coastal Heath – E26e

	<i>Kennedia rubicunda</i>	1	50%	1	11%	uninformative
	<i>Pandorea pandorana subsp. pandorana</i>	1	50%	1	24%	uninformative
	<i>Stephania japonica var discolor</i>	1	50%	1	17%	uninformative
Sedge/ Rush	<i>Lepyrodia scariosa</i>	3	50%	2	19%	positive
	<i>Lepidosperma concavum</i>	2	50%	1	1%	positive
	<i>Cyathochaeta diandra</i>	1	100%	2	20%	uninformative