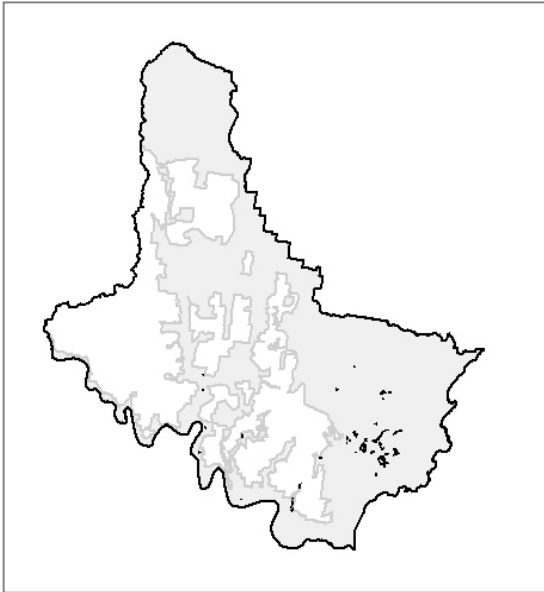


Estuarine Saltmarsh/ Grassland

Mangrove Estuarine Complex

Unit E47a
REMS Unit 47



General Description:

Estuarine Saltmarsh/ Grassland occurs immediately within and adjacent to tidal estuaries. This community occurs in close association with Estuarine Mangrove Scrub, but differs structurally and floristically by the clear dominance of species such as *Sarcocornia quinqueflora* subsp. *quinqueflora*, *Samolus repens* and *Suaeda australis* in saltmarsh; and *Zoysia macrantha* and *Sporobolus virginicus* in grasslands.

Known Floristic/ Structural Variations:

- (a) Saltmarsh (included in E47a) – saltmarsh flats dominated by *Sarcocornia quinqueflora* subsp. *quinqueflora*, *Samolus repens* and *Suaeda australis*. Occasional emergent *Avicennia marina* subsp. *australisica* may also be present.
- (b) Grassland (included in E47a) – grasslands may be interspersed within saltmarsh and mangrove, and are dominated by *Zoysia macrantha* and *Sporobolus virginicus*.
- (c) Wet meadows (included in E47a) – Payne (1997) briefly outlines saline wet meadows near Kincumber Crescent at Davistown dominated by *Schoenoplectus littoralis*, which he states is the only known location of this type in the region.

Distribution:

Within Gosford LGA – occurs mainly on the larger mudflats of the coastal estuaries.

Within LHCC Region – NPWS (2000) have mapped 6111ha of their Mangrove-Estuarine Complex remaining in the region.

Examples Within Gosford LGA

- Cockle Bay Nature Reserve
- Davistown-Saratoga

Extent: *Extant* - 118.29 ha

Relationship to Other Communities:

Estuarine Saltmarsh/ Grassland is floristically distinct from all other vegetation types. Estuarine Mangrove Scrub (Unit 47) may support a similar suite of species, however the dominance of a scrub or small tree layer of mangroves clearly separates the two. Estuarine Swamp Oak Forest (Unit E40) also occurs in close proximity to the coastal estuaries, and consequently some understorey species do occur in both types. However, the presence of Swamp Oak (*Casuarina glauca*) in monospecific stands clearly separate the two. Swamp Paperbark Thicket (Unit E100) may also occur near coastal estuaries, but that unit is clearly distinguished by the often monospecific stands of *Melaleuca ericifolia*.

Equivalent Vegetation Types:

• Benson 1981 (Mangrove Creek):	n/a
• Benson & Fallding 1981 (Brisbane Water)	n/a
• Benson 1986 (Gosf-Lake Mac):	Open-Scrub (Unit 4a)
• Clarke & Benson 1986 (Dharug):	Herbland/ Sedgeland – Saltmarsh (Unit A2)
• Strom 1986 (Bouddi Peninsula):	n/a
• Clarke & Benson 1987 (Mt White/ Mt Olive):	Saltmarsh (Unit A2)
• McRae 1990 (Bouddi Peninsula):	n/a
• Binns 1996 (SF MFD):	n/a
• Payne 1997 (Cockle Bay/ Bouddi):	Shrubland, herbland on estuarine alluvium (Unit 4.3)
• Bell 1998 (Popran NP):	Estuarine Saltmarsh (Unit SM1)
• Bell 2002 (Wyong LGA):	Estuarine Mangrove-Saltmarsh Complex (Unit 2)

Significant Species:

- Undescribed species – *none recorded*
- Threatened (TSC Act) – *none recorded*
- Rare (ROTAP) – *none recorded*

Community Conservation Status:

Reserve Representation - within Gosford City, this vegetation type is currently represented in Cockle Bay NR, Rileys Island NR, Pelican Island NR.

TSC Act (1995) Status - not currently listed.

Mapping Reliability & Included Units:

High Resolution Area – this vegetation type has been mapped directly from aerial photographs with ground truthing in some parts. There is likely to be some integration with Unit 47.

Low Resolution Area – not mapped for the low resolution area, but was included in the modelling of Unit 47 by NPWS (2000).

Vegetation Structure:

No structural data is yet available for this community, however it typically comprises a sparse-to-dense ground cover up to 0.3m in height.

Key Diagnostic Species [no plots available]:

Diagnostic species have not been generated for this community due to a lack of suitable floristic data. *Sarcocornia quinqueflora*, *Sporobolus virginicus* and *Zoysia macrantha* are normally dominant in this community. The following species list is based on field observations at known sites.

Life Form	Species	Community		All others		Fidelity
		c/a	Freq.	c/a	Freq.	
Herb	<i>Sarcocornia quinqueflora</i>	-	-	-	-	-
	<i>Suaeda australis</i>	-	-	-	-	-
	<i>Selliera radicans</i>	-	-	-	-	-

Estuarine Saltmarsh/ Grassland – E47a

	<i>Samolus repens</i>	-	-	-	-	-
Grass	<i>Sporobolus virginicus</i>	-	-	-	-	-
	<i>Zoysia macrantha</i>	-	-	-	-	-